



MONTHLY MEMBERSHIP PROGRESS REPORT

District 2 S5

Results as of: 06/30/2019

GMT: OPEN

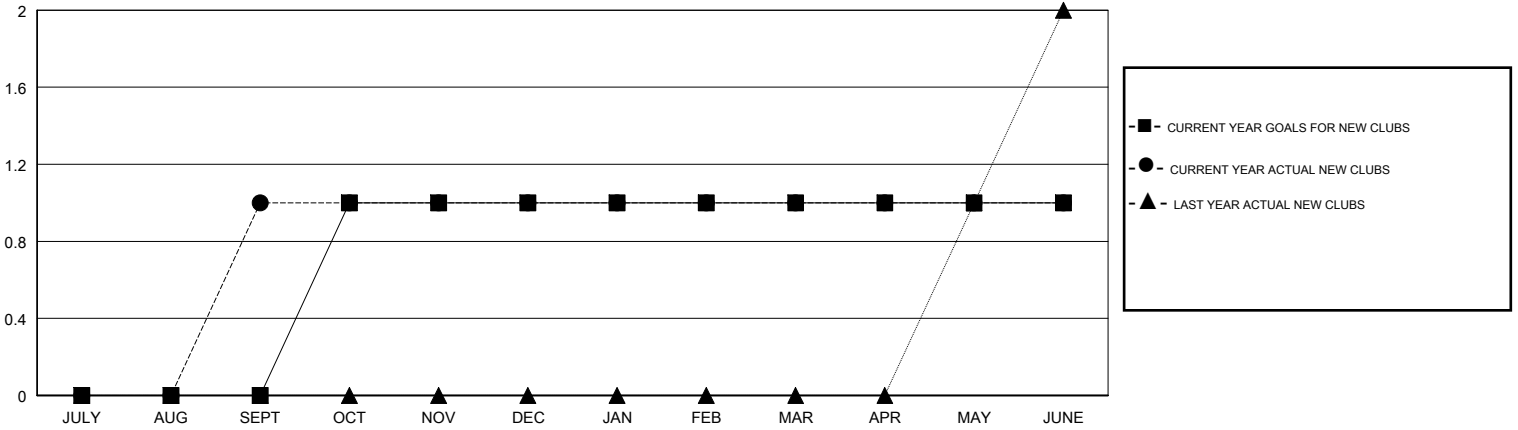
LOCATION TEXAS

GMT CA

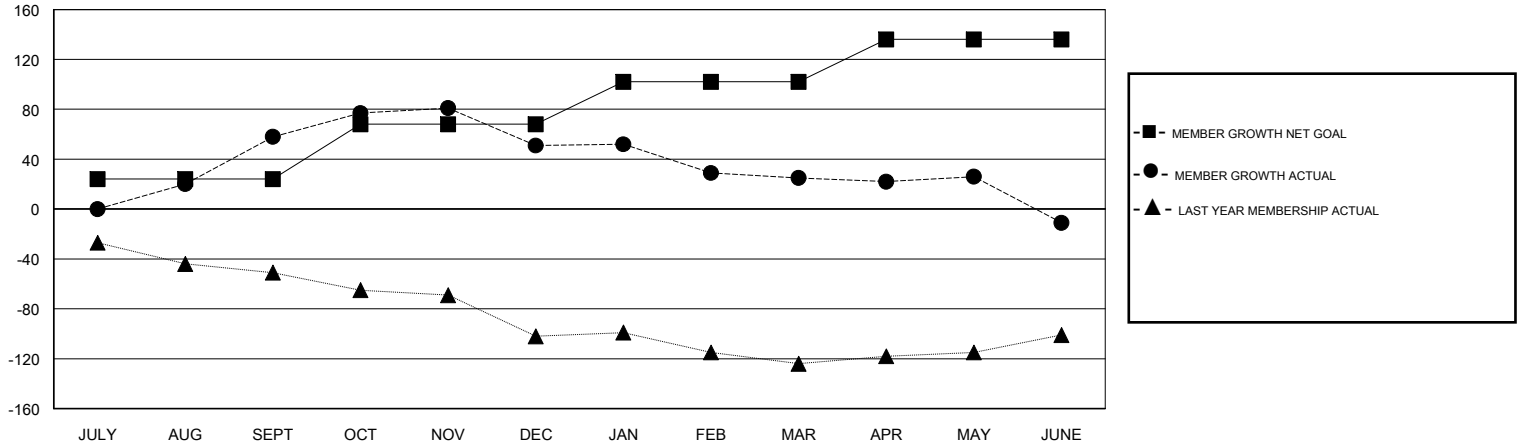
Clubs			
RESULTS FOR 2018-2019			
QUARTER	NEW CLUB GOAL	NEW CLUBS	DROPPED CLUBS
JULY/AUG/SEPT	0	1	0
OCT/NOV/DEC	1	0	0
JAN/FEB/MAR	0	0	1
APR/MAY/JUNE	0	0	0

Members			
RESULTS FOR 2018-2019			
QUARTER	MEMBER GROWTH NET GOAL	MEMBER GROWTH ACTUAL	DROPPED MEMBERS ACTUAL (including transfers)
JULY/AUG/SEPT	24	116	48
OCT/NOV/DEC	44	68	73
JAN/FEB/MAR	34	93	94
APR/MAY/JUNE	34	97	106

GOALS AND ACTUAL NEW CLUBS CUMULATIVE



GOALS AND ACTUAL MEMBERS CUMULATIVE



DROPPED CLUBS: 1	54 CLUBS OF 62 ADDED 1 OR MORE NEW MEMBERS	<u>GENDER DISTRIBUTION</u>	
DROPPED MEMBERS		MALE	1,501 (61.54%)
DECEASED	21	FEMALE	938 (38.46%)
CLUB CANCELLED	0	Women Percentage Fiscal Year Goal: 40%	
OTHER	300	TOTAL FAMILY UNIT MEMBERS	406
TOTAL	321	FAMILY MEMBERS PAYING HALF DUES	205

[CLICK HERE FOR CUMULATIVE MEMBERSHIP DATA](#)